

FOR LEASE

INDUSTRIAL & OFFICE SUITES



WEST OAKS PARK

30941 - 30961 AGOURA RD., WESTLAKE VILLAGE, CA 91361

GRANT FULKERSON, SIOR

Principal

818.304.4956

gfulkerson@lee-re.com

www.fulkerson-re.com

DRE# 01483890

JARED SMITS

Principal

818.444.4986

jsmits@lee-re.com

www.LeeWestlake.com

DRE# 01839532

DREW STEWART

Associate

805.390.4455

dstewart@lee-re.com

www.LeeWestlake.com

DRE# 01859831



COMMERCIAL REAL ESTATE SERVICES



VENTURA FWY/US-101

INGOURA RD

Exceptional Business Environment, Westlake Village's possesses business-friendly policies, including the absence of a city business license or local business tax.

Business-Friendly Environment, No city business license or business tax required, reducing administrative burden and operating costs.

Strong Local Business Community, High-Quality Workforce & Affluent Demographics.

Easy Transportation Access, close to the Ventura Freeway (US-101), including freeway frontage.

Numerous Retail Amenities, in close proximity to the project.

Renovation in Progress, Including Architectural and Landscaping.

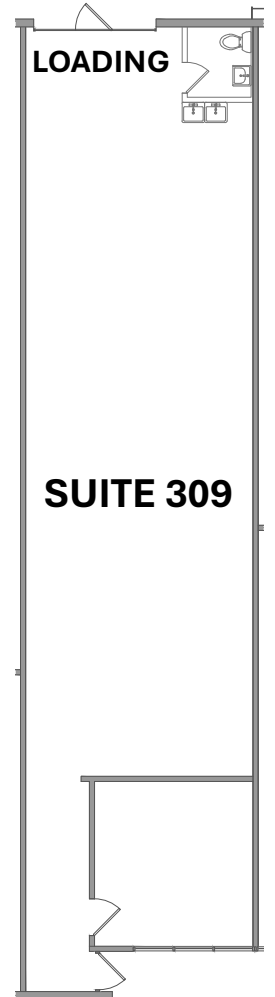
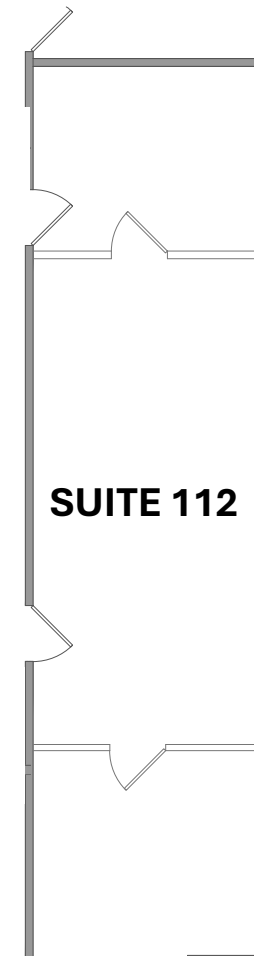
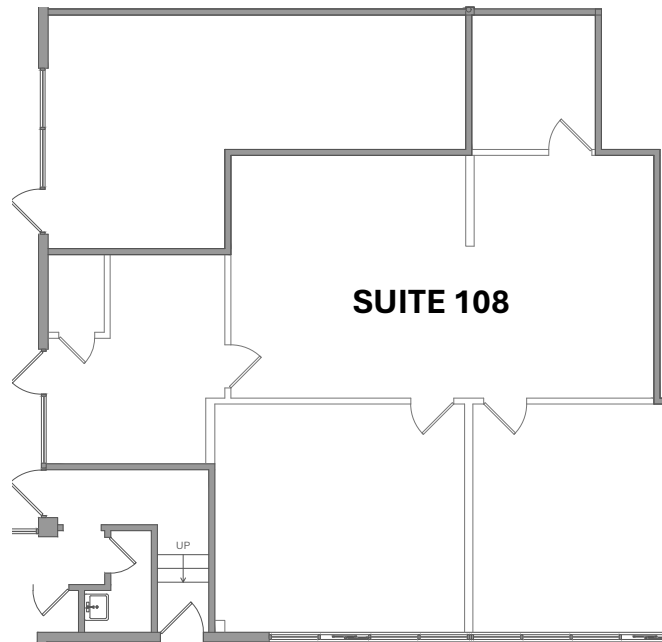
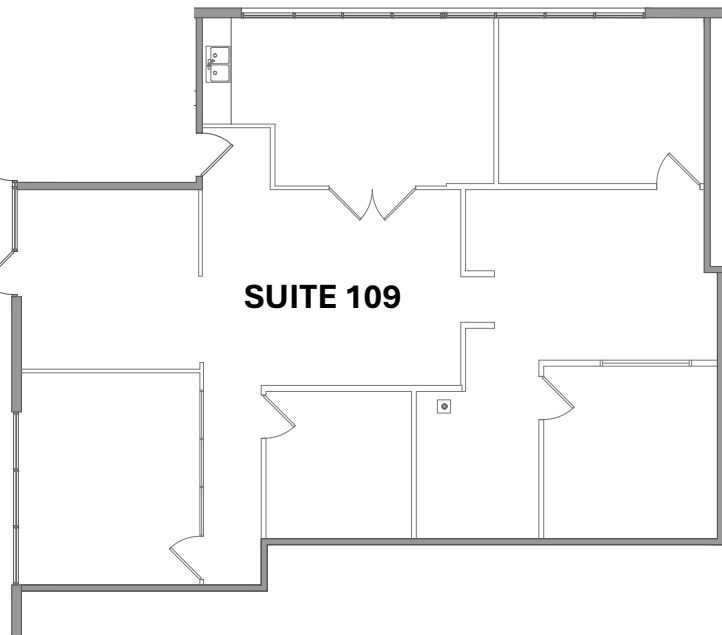
AVAILABILITY &
SPECIFICATIONS

30941

30961

AGOURA ROAD

TYPE	BLDG	SUITE	SIZE	LOADING	CLR HGT	PARKING	LEASE RATE (PSF MG)	CAM (PSF)	STATUS
OFFICE	30941	112	766 SF	N/A	N/A	3 stalls	\$2.20	\$0.10	Vacant
OFFICE	30941	108	1,607 SF	N/A	N/A	7 stalls	\$2.20	\$0.10	Vacant
OFFICE	30961	109	2,099 SF	N/A	N/A	8 stalls	\$2.20	\$0.10	Vacant
INDUSTRIAL	30961	309	1,742 SF	One (1) GL	16'	3 stalls	\$1.95	\$0.10	Vacant



PROPERTY PHOTOS

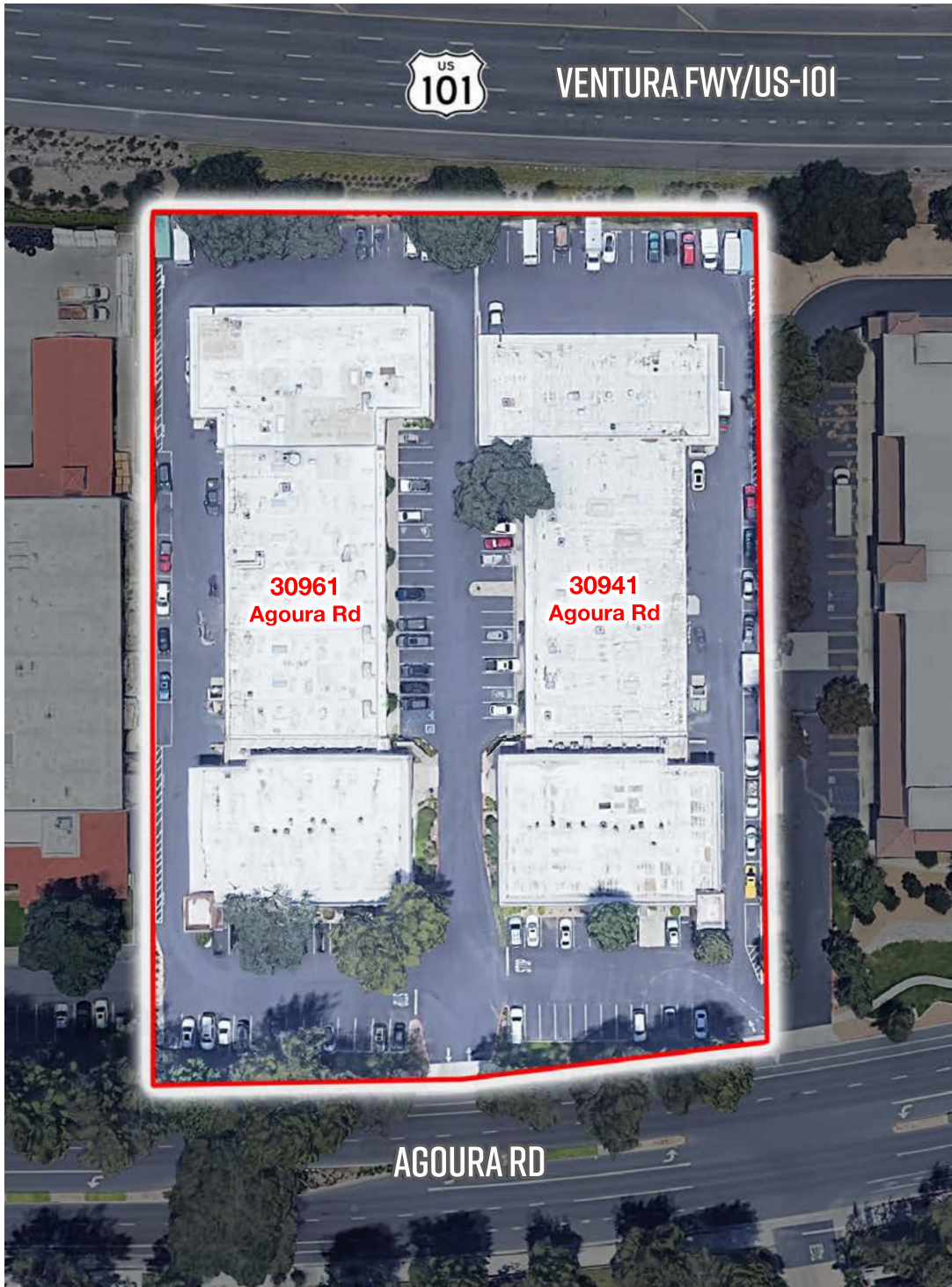


LOCATOR MAP



AMENITIES MAP





VENTURA FWY/US-101

**30961
Agoura Rd**

**30941
Agoura Rd**

AGOURA RD

WEST OAKS PARK

30941 - 30961 AGOURA RD.,
WESTLAKE VILLAGE, CA 91361



FOR MORE INFORMATION, PLEASE CONTACT:

GRANT FULKERSON, SIOR

Principal

818.304.4956

gfulkerson@lee-re.com

www.fulkerson-re.com

DRE# 01483890

JARED SMITS

Principal

818.444.4986

jsmits@lee-re.com

www.LeeWestlake.com

DRE# 01839532

Drew Stewart

Associate

805.390.4455

dstewart@lee-re.com

www.LeeWestlake.com

DRE# 01859831

No warranty or representation is made to the accuracy of the foregoing information. Terms of sale or lease and availability are subject to change or withdrawal without notice. CID #01191898