

**31248** OAK CREST DR, WESTLAKE VILLAGE, CA

**MAJOR PRICE  
REDUCTION**



**OFFICE  
FOR  
SUBLEASE**

**JARED SMITS**  
Principal  
818.444.4986  
jsmits@lee-re.com  
DRE# 01839532

**GRANT FULKERSON, SIOR**  
Principal  
818.304.4956  
gfulkerson@lee-re.com  
DRE# 01483890

**LEE &  
ASSOCIATES**  
COMMERCIAL REAL ESTATE SERVICES

No warranty or representation is made to the accuracy of the foregoing information. Terms of sale or lease and availability are subject to change or withdrawal without notice. CID #01191898

# 31248 Oak Crest Dr

Westlake Village, CA

**AVAILABLE FOR SUBLEASE**

## AVAILABILITIES

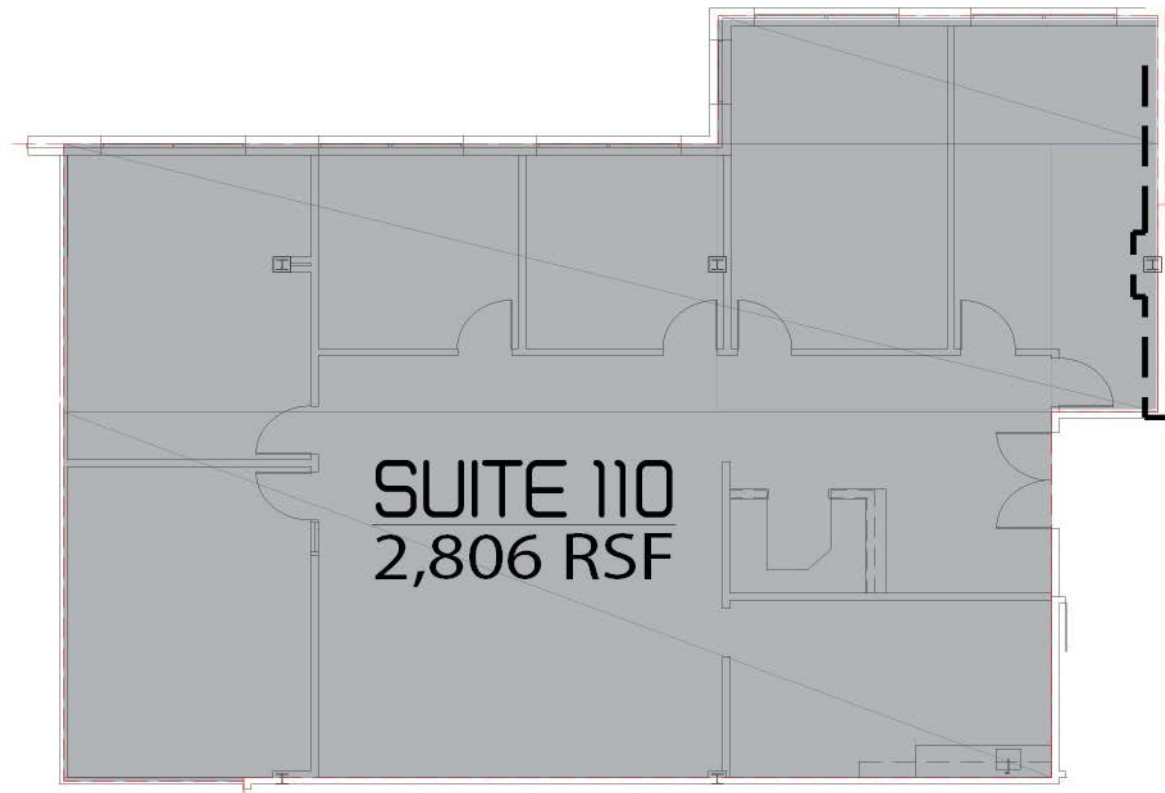
SUITE	SQ. FT.	RATE	AVAILABILITY	SUBLEASE EXPIRATION
110	2,806	<del>\$2.75 FSG</del>	60 Day Notice	Occupied Sublease (Exp. 1/31/26)

\$2.15 FSG

## HIGHLIGHTS

- 5 Window Offices, Conference Room, Kitchen, Reception Area, and bullpen for up to 8 people
- Located in Westlake Village, Close to Amenities With Excellent Access to Ventura (101) Freeway
- High-end modern finishes
- Furniture Negotiable

## FLOORPLAN



\*Not to scale



# 31248 Oak Crest Dr

Westlake Village, CA

**AVAILABLE FOR SUBLEASE**





# 31248 Oak Crest Dr

Westlake Village, CA

**AVAILABLE FOR SUBLEASE**



**JARED SMITS**  
Principal  
818.444.4986  
jsmits@lee-re.com  
DRE# 01839532

**GRANT FULKERSON, SIOR**  
Principal  
818.304.4956  
gfulkerson@lee-re.com  
DRE# 01483890

**LEE & ASSOCIATES**

COMMERCIAL REAL ESTATE SERVICES

Lee & Associates\* - LA North/Ventura, Inc. - CID #01191898

A Member of the Lee & Associates\* Group of Companies

5707 Corsa Ave, Suite 200, Westlake Village, CA 91362

P:818.223.4388 F:818.591.1450

No warranty or representation is made to the accuracy of the foregoing information. Terms of sale or lease and availability are subject to change or withdrawal without notice. CID #01191898