

2433 EASTMAN AVE
Ventura, California

INDUSTRIAL
FOR LEASE



GRANT FULKERSON, SIOR
Principal
818.304.4956
gfulkerson@lee-re.com
DRE# 01483890

MIKE TINGUS
President
818.223.4380
mtingus@lee-re.com
DRE# 01013724



LEE & ASSOCIATES
COMMERCIAL REAL ESTATE SERVICES



AVAILABLE:
15,000 SF



TOTAL OFFICE:
250 SF



CLEAR HEIGHT:
±24 FT



LOADING:
1 GROUND LEVEL



POWER:
200 AMPS



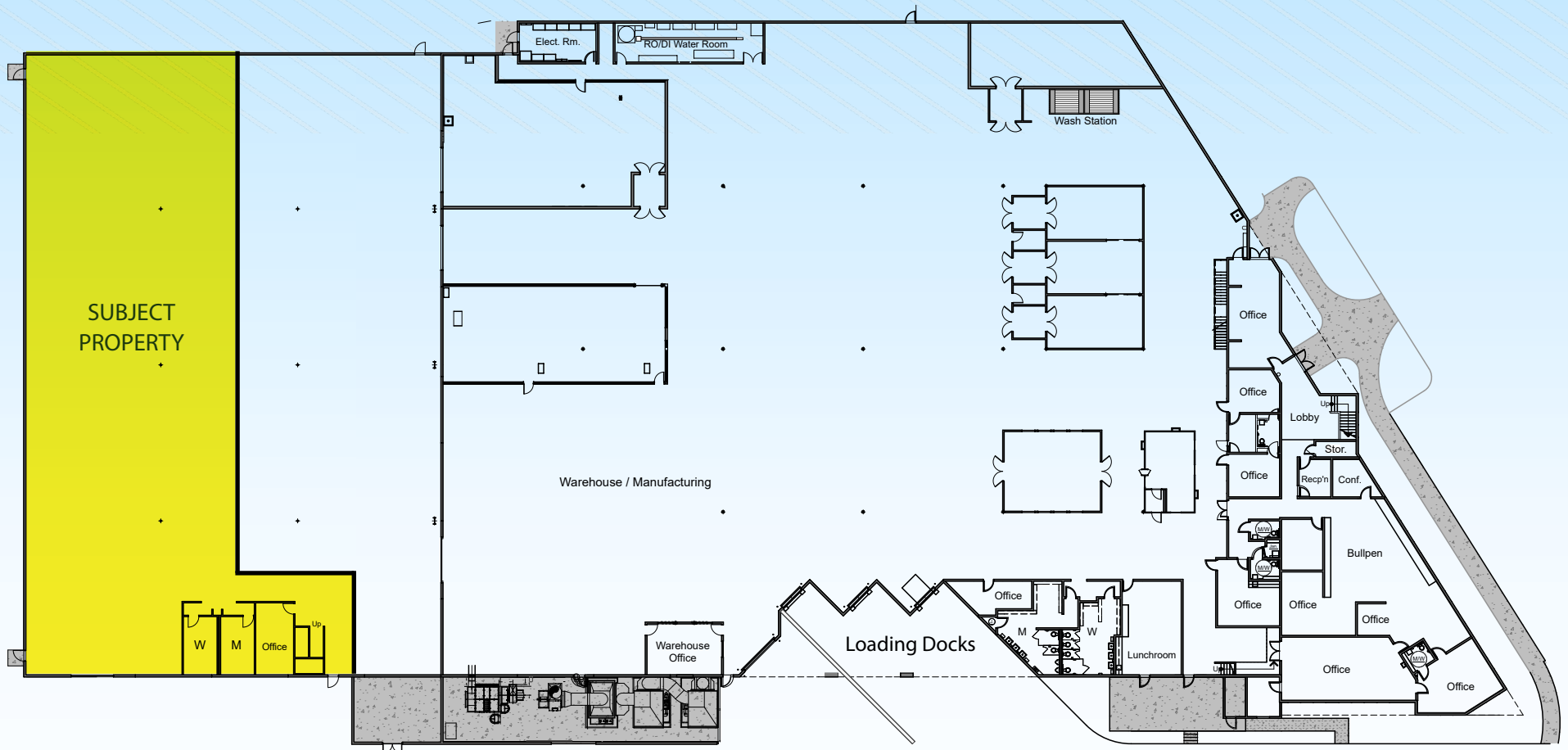
ZONING:
MPD



YEAR BUILT:
1988 | R 2000



PARKING:
30 SPACES (2/1000)

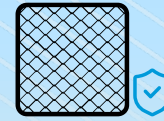




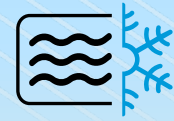
FIRST CLASS FACILITY



SHORT-TERM STORAGE/DISTRIBUTION



SECURED YARD



100% HVAC

LEASE RATE: \$0.95 GROSS



Pacific Ocean

Olivas Park Dr

Harbor Blvd

Telephone Rd

2433 EASTMAN AVE
VENTURA, CA

SUBJECT PROPERTY

Dupont Ct

Eastman Ave



★ macy's TARGET OLD NAVY ROSS DRESS FOR LESS
 JCPenney TRADER JOE'S Bath & Body Works VICTORIA'S SECRET pinkberry charlie's
 PIZZA HUT Starbucks Dunkin' Donuts See's CANDIES Jockey MINTS SEPHORA charlotte russe
 CVS pharmacy WOODRANCH BevMO! RED ROBIN claire's
 at&t AÉROPOSTALE CHASE SUBWAY 24 FITNESS
 EXPRESS Massage Envy SPA
 T-Mobile FLENSCHAFTERS Foot Locker HOLLISTER metro PCS

CVS pharmacy Denny's
 FASTER

Ventura College

Pacific View Mall

LOWE'S CHIPOTLE MEXICAN GRILL
 WELLS FARGO cbc Federal Credit Union verizon UnionBank

BARNES & NOBLE BOOKS ELLERRE KOHL'S expect great things Michaels Where Creativity Matters!
 SPROUTS Famous Footwear STONE ISLAND VITAMIN SHOPPE
 PETSMART Panera SEPHORA
 Sharky's Planet Beauty Game Stop Urbane Cafe five BEER

County of Ventura Government Center

HARBOR FOODS VONS 99¢ ONLY SHOP RITE FRESH FARMERS JUST MYE THAT Starbucks
 CHIPOTLE citibank T-Mobile Pets Coffee & Tea AAA
 BANK OF AMERICA Little Caesars FANTASTIC SAM'S HAIR SALONS
 Wingy's presto para BR FIRST BANK PAPA JOHN'S NOAH'S
 LunaGrill COSMO PROF Community West Bank

BED BATH & BEYOND TARGET BIG 5 SPORTING GOODS
 LASSENS CVS pharmacy BIG BRAND TIRE & SERVICE Advance Auto Parts
 Starbucks eyeglass factory Reid's Appliances TOPPERS Egg's Things
 cricket usbank FASTSIGNS SportClips HAIRCUTS
 McDonald's MIDAS FIREHOUSE SUBS DECKERS BRANDS F&S Training
 Office DEPOT ROSS PETCO Orangetheory CVS pharmacy
 jenny O'Reilly NERCES FINE JEWELRY FedEx Onix
 LAMPS PLUS HONEYBAKED SAS DELTA PACO SHERWIN WILLIAMS
 ALDI SUPERCUTS PLAY IT AGAIN SPORTS SALLY MATTRESS FIRM FIT BODY BOOT CAMP

Telephone Rd
 Market St

Burlington WinCo FOODS BLAZE PIZZA Tuesday Morning
 CRUCE EXPRESS'S Häbit BURGER GRILL DOLLAR TREE BLACK ANGUS DOMINIC VITACRETE
 Montecito Bank & Trust Arby's Chick-fil-c Waba

Walmart Ralphs CVS pharmacy TRADER JOE'S
 LA FITNESS JIMMY JOHN'S IHOP GNC THE UPS STORE
 PANDA EXPRESS SUSHI MONSTER CARLS JR. Pollo Loco SUMO RUBIO'S
 SUPERCUTS CHASE KGLAND Caribbean Haven
 Starbucks JJ's R. Bek's Jack verizon Batteries Plus

★
SUBJECT
 2433 Eastman Ave
 Ventura, CA

Ventura Auto Center



10-Miles

5-Miles

3-Miles

SUBJECT

★
2433 Eastman Ave
Ventura, CA

GRANT FULKERSON, SIOR
Principal
818.304.4956
gfulkerson@lee-re.com
DRE# 01483890

MIKE TINGUS
President
818.223.4380
mtingus@lee-re.com
DRE# 01013724



LEE & ASSOCIATES
COMMERCIAL REAL ESTATE SERVICES

Lee & Associates®
LA North/Ventura, Inc.
Corporate ID #01191898
A Member of the Lee & Associates
Group of Companies
5707 Corsa Avenue, Suite 200
Westlake Village, CA 91362
P 818.223.4388 F 818.591.1450
www.lee-associates.com