

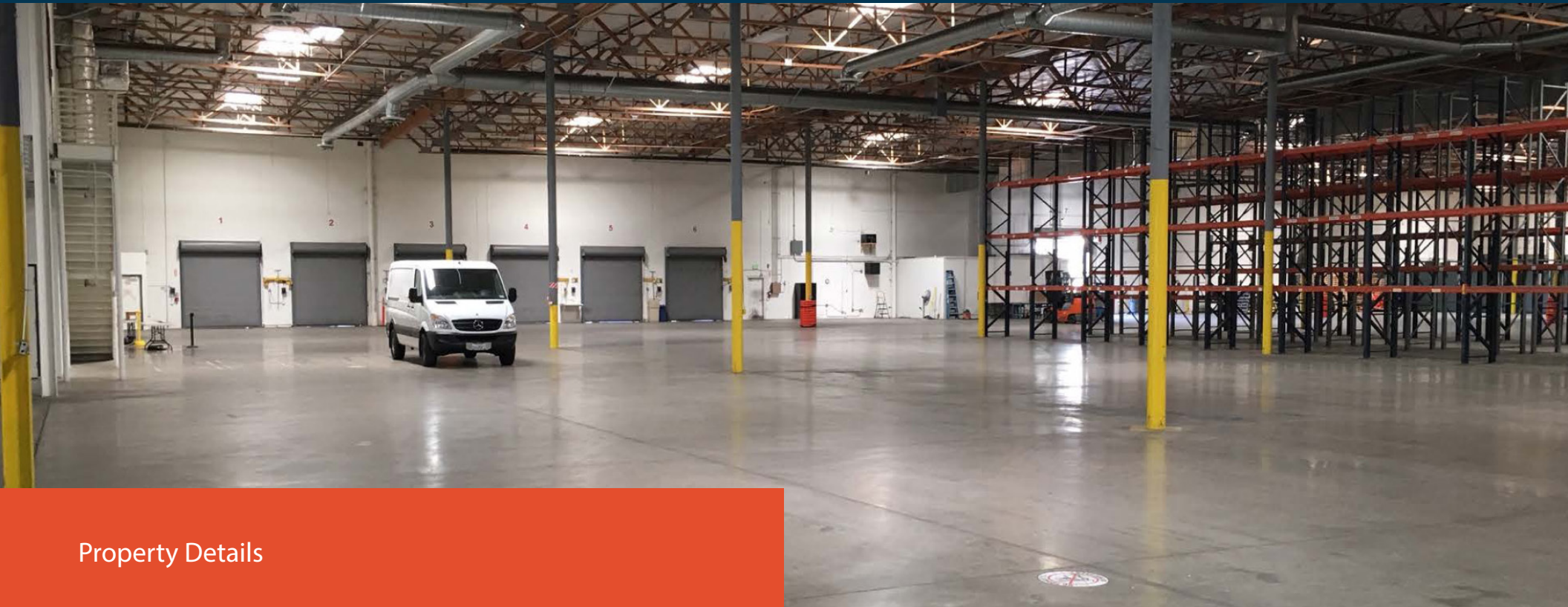


- 24 ft Clear Height | ESFR Sprinklers
- Truck Court with 143 ft Turning Radius
- 8 Dock High Doors

96,641 SF AVAILABLE FOR LEASE

INDUSTRIAL FACILITY | FOR LEASE

2280 Ward Ave | Simi Valley, CA



Property Details

AVAILABLE: 96,641 SF

OFFICE: 9,545 SF

CLEAR HEIGHT: 24 FT

DOCK HIGH LOADING: 8 Dock High Doors

GROUND LEVEL LOADING: 1 Ground Level Door

PARKING: 115 Parking Stalls

POWER: 800 AMPS, 277/480 Volts

SPRINKLERS: ESFR

ZONING: G1

YARD: Private and Fenced

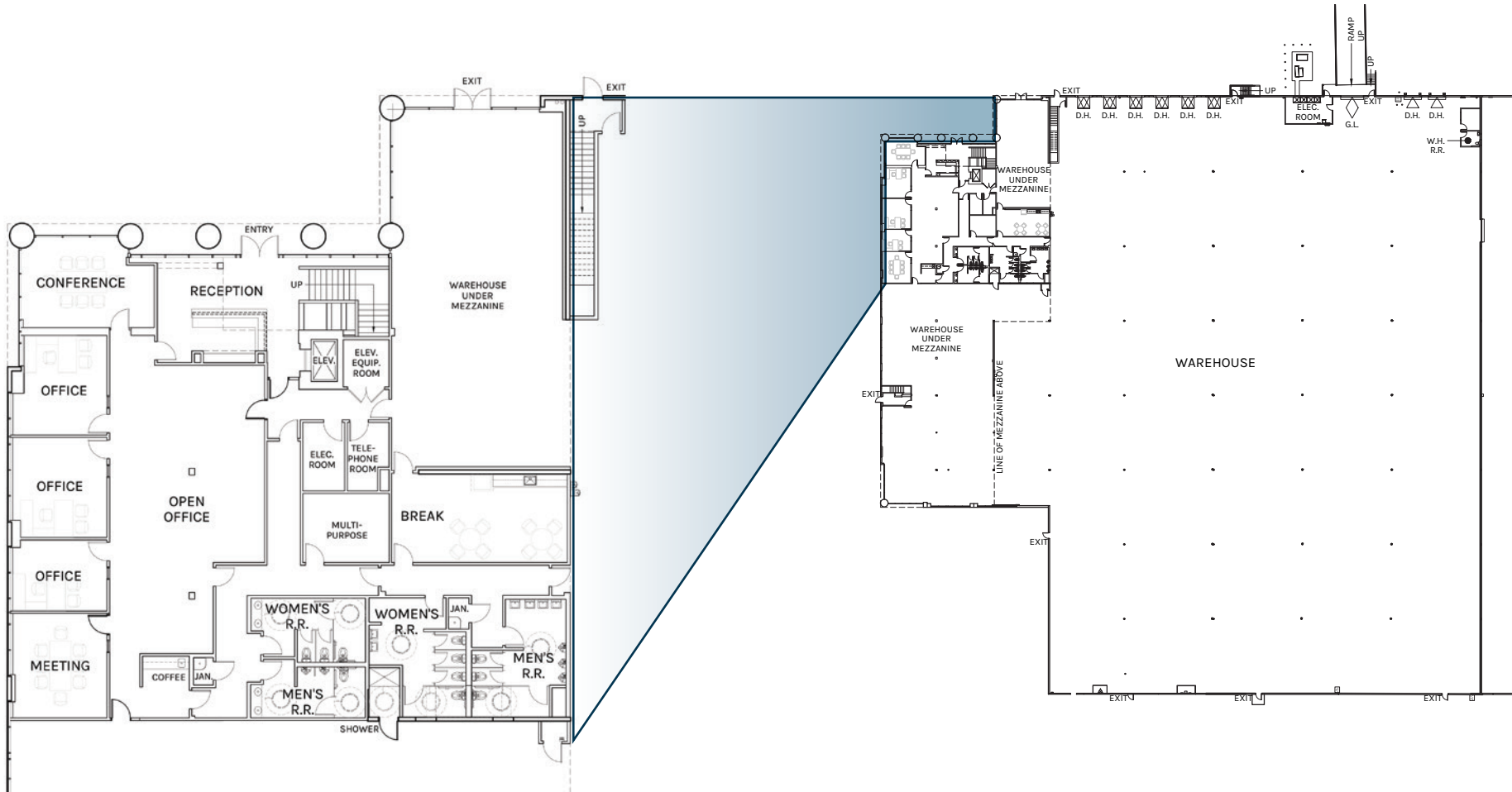
ASKING RATE: \$1.45 PSF MG





WAREHOUSE DISTRIBUTION FACILITY

- Outstanding Clearance Height
- Enormous Concrete Truck Yard With 143' Turning Radius
- ESFR Sprinklers
- Expansion Capabilities
- Close Proximity to Highway 118
- High Image Distribution Facility
- Gated and Fenced

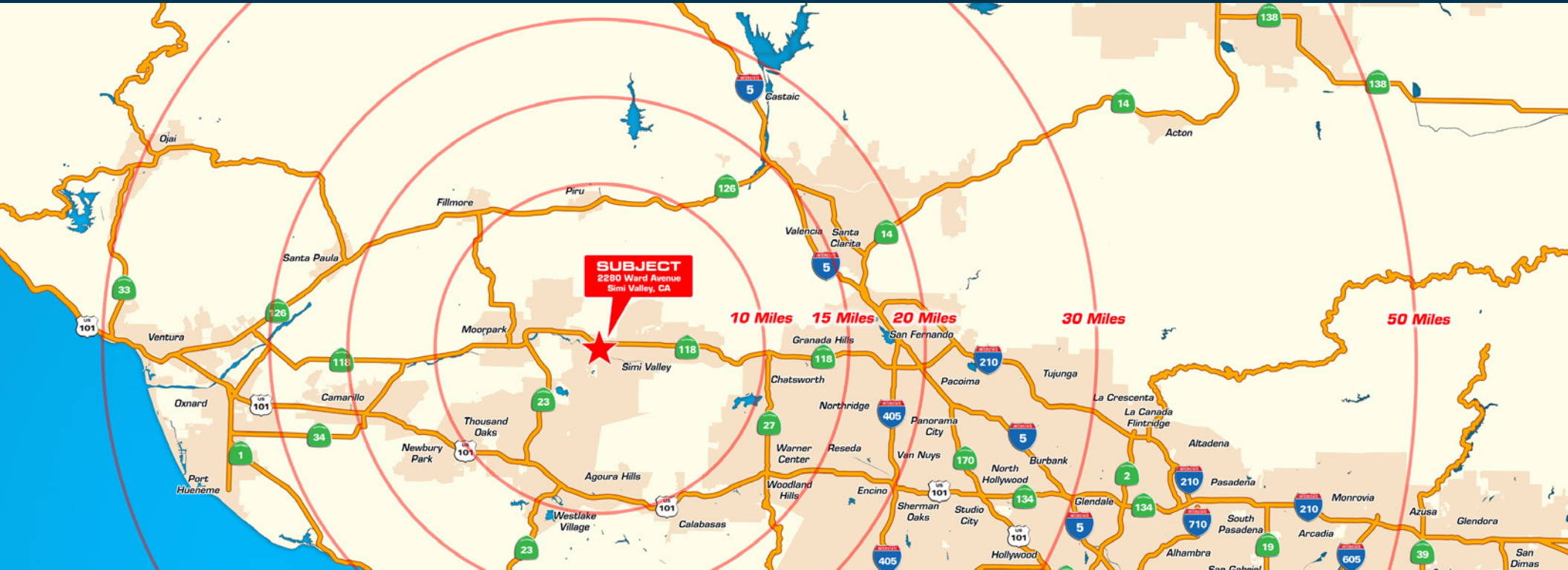


WAREHOUSE
87,096 SF

OFFICE
9,545 SF

TOTAL
96,641 SF

PLAN LAYOUT SUBJECT TO FIELD CONDITIONS AND MAY DIFFER FROM PLAN AS SHOWN. ALL INFORMATION PRESENTED ON THIS DRAWING IS PRESUMED TO BE ACCURATE, HOWEVER TENANT SHOULD VERIFY PERTINENT INFORMATION PRIOR TO COMMITTING TO A LEASE. ANY FURNITURE OR APPLIANCES SHOWN ON PLAN ARE FOR CONCEPT ONLY AND WILL BE TENANT PROVIDED.



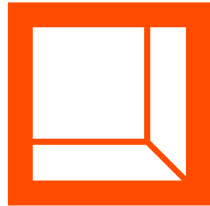
Approximate Drive Times

52 Minutes LAX	30 Minutes Burbank Airport
90 Minutes Port of Long Beach	35 Minutes Port Hueneme
49 Minutes Downtown LA	60 Minutes City of Commerce/ Industry

Los Angeles
Int'l Airport (LAX)
± 30 Miles

Port of
Long Beach
± 49 Miles





**Rexford
Industrial**

Leasing Contacts

GRANT FULKERSON, SIOR

Principal

818.304.4956

gfulkerson@lee-re.com

www.fulkerson-re.com

LIC #01483890

JOE JUSKO

Principal

818.223.4397

jjusko@lee-re.com

www.jjusko.com

LIC #00875413

MIKE TINGUS

President

818.223.4380

mtingus@lee-re.com.com

www.miketingus.com

LIC #01013724



Lee & Associates LA North/Ventura

5707 Corsa Ave., Ste. 200

Westlake Village, CA 91362

818.223.4388

lee-associates.com

No warranty or representation is made to the accuracy of the foregoing information. Terms of sale or lease and availability are subject to change or withdrawal without notice.