

CHAMBERS BUSINESS PARK

FOR LEASE

SIMI VALLEY, CA



GRANT FULKERSON, SIOR  
Principal  
818.304.4956  
gfulkerson@lee-re.com  
www.fulkerson-re.com  
DRE# 01483890

RYAN PELINO  
Associate  
818.854.5514  
rpelino@lee-re.com  
License ID # 02223932



LEE & ASSOCIATES  
COMMERCIAL REAL ESTATE SERVICES



**SUPERB STREET IDENTITY**  
(13K + CARS/DAY)



**NUMEROUS RETAIL AMENITIES NEARBY**



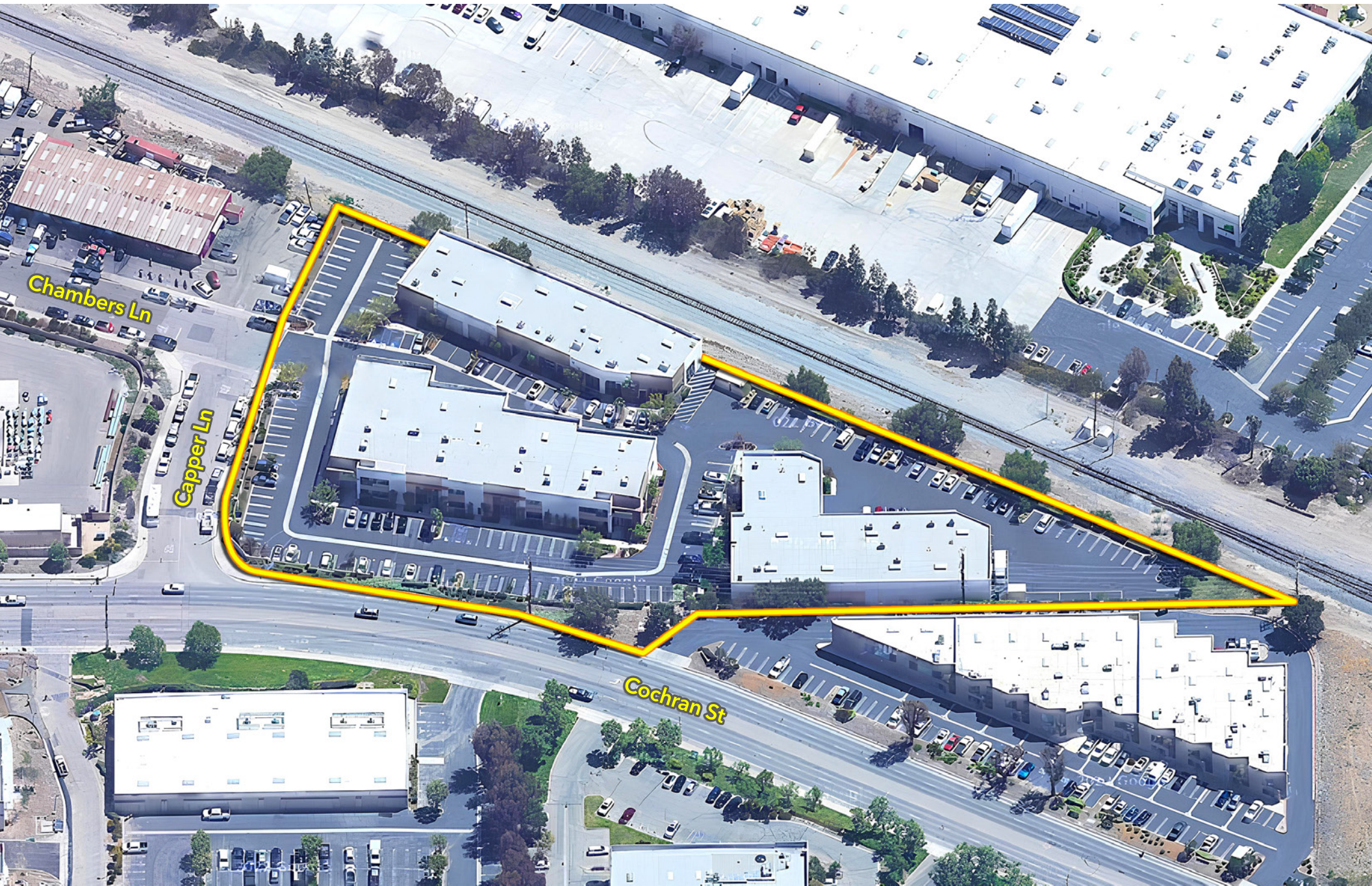
**IMMEDIATE ACCESS TO HIGHWAY 118**



**PARKING STALLS:**  
3/1,000



**CLEAR HEIGHT:**  
±18 FT





SIZE:  
3,360 SF



TOTAL OFFICE:  
1,370 SF



WAREHOUSE:  
1,900 SF

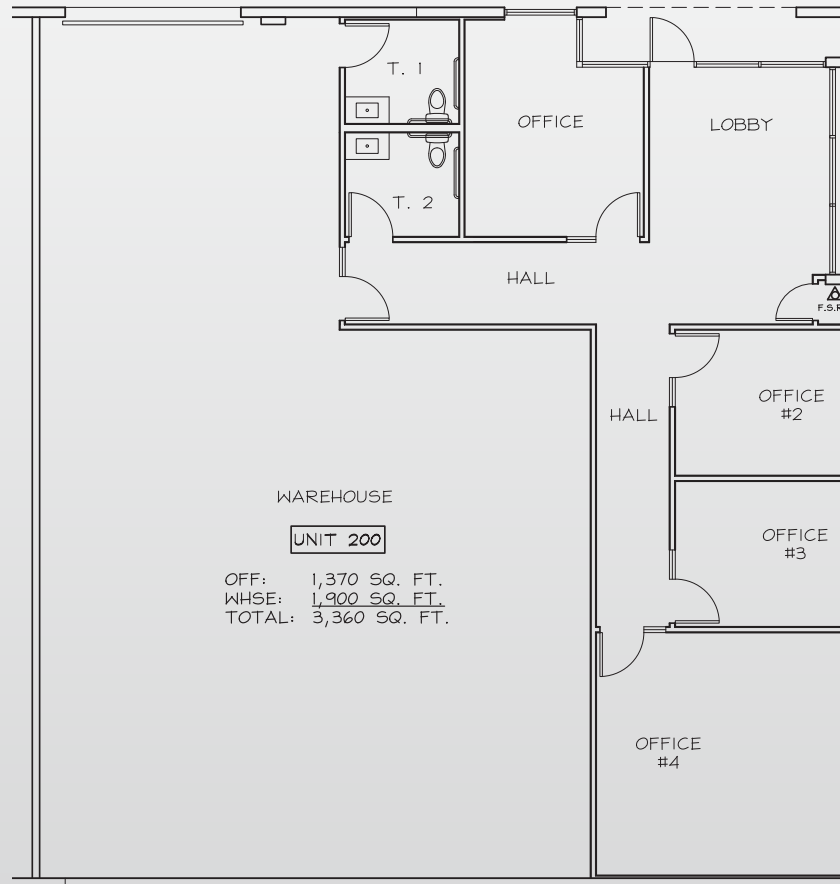


LOADING:  
(1) GL



POWER:  
200A 277/480V

LEASE RATE: \$1.75 PSF MG



FLOOR PLAN



GRANT FULKERSON, SIOR  
 Principal  
 818.304.4956  
 gfulkerson@lee-re.com  
 www.fulkerson-re.com  
 DRE# 01483890

RYAN PELINO  
 Associate  
 818.854.5514  
 rpelino@lee-re.com  
 License ID # 02223932

