

**AVAILABLE**  
1ST QUARTER 2025

27349 AGOURA ROAD

**LIBERTY CANYON TECH CENTER**

CALABASAS, CA. 91302



**LEE & ASSOCIATES**  
COMMERCIAL REAL ESTATE SERVICES

**MIKE TINGUS**

President  
818.223.4380  
mtingus@lee-re.com  
DRE# 01013724

**GRANT FULKERSON, SIOR**

Principal  
818.304.4956  
gfulkerson@lee-re.com  
DRE# 01483890

PROFESSIONALLY DEVELOPED,  
OWNED AND MANAGED BY:

**CYPRESS LAND CO.**





HEAVY POWER:  
3,000 AMPS



EXCEPTIONAL  
CLEAR  
HEIGHT: 24'



DOCK HIGH &  
GROUND LEVEL  
LOADING



+3/1,000 PARKING  
266 STALLS



EXCEPTIONAL VISIBILITY  
FROM 101 FREEWAY



NO GROSS  
RECEIPTS TAX

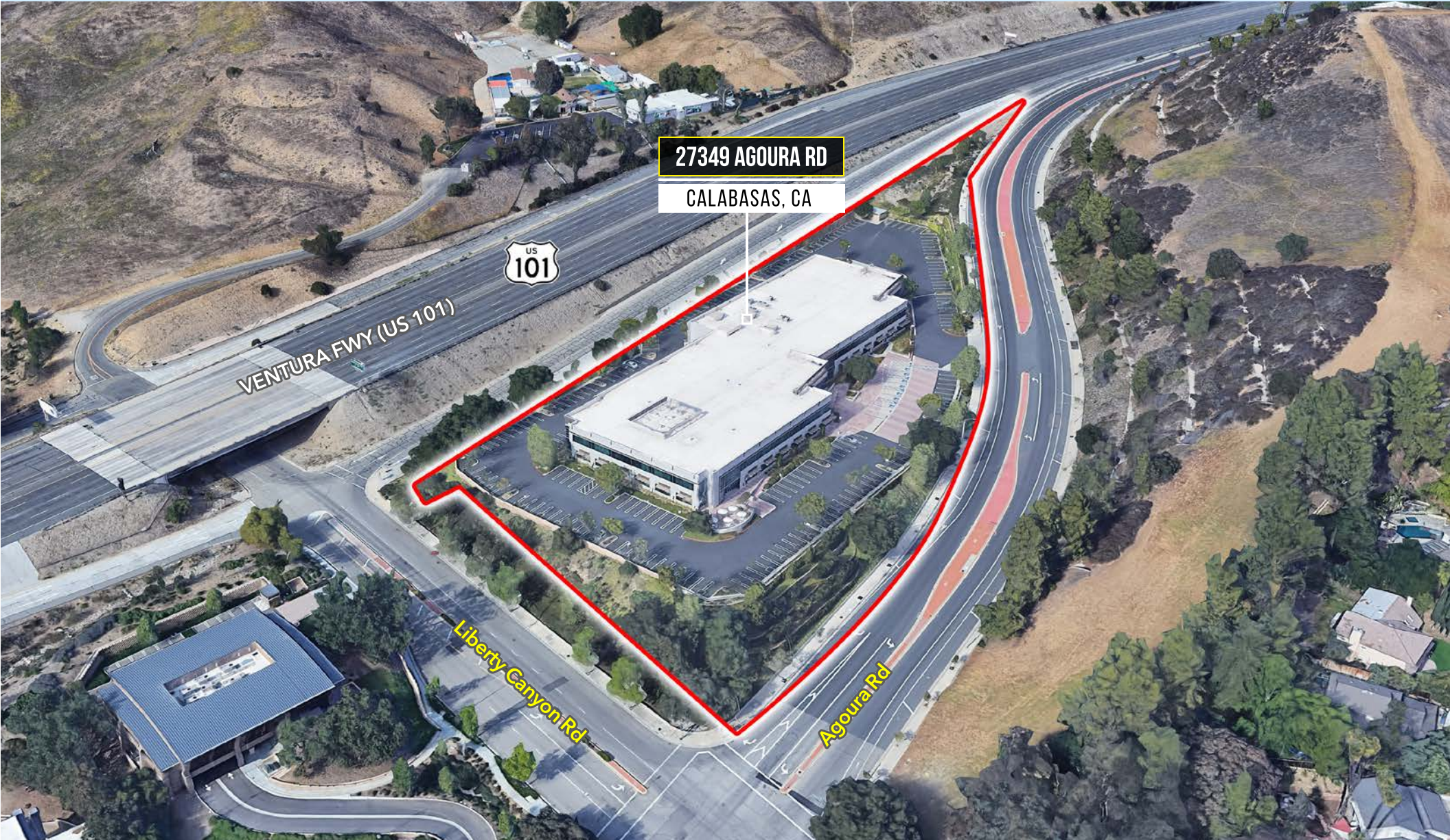


100%  
HVAC



IDEAL CORPORATE  
HQ FACILITY

83,838 SQUARE FEET | LEASE RATE: TBD



27349 AGOURA RD

CALABASAS, CA



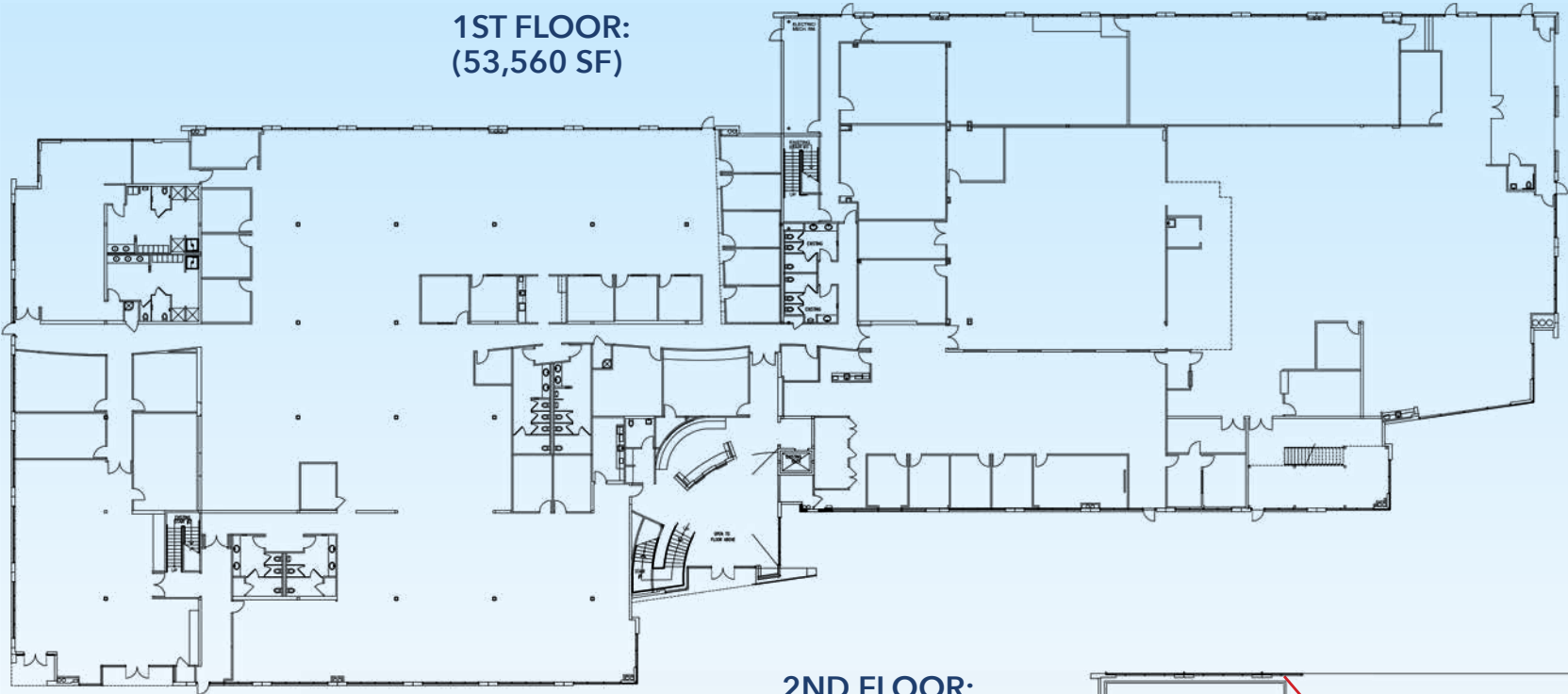
VENTURA FWY (US 101)

Liberty Canyon Rd

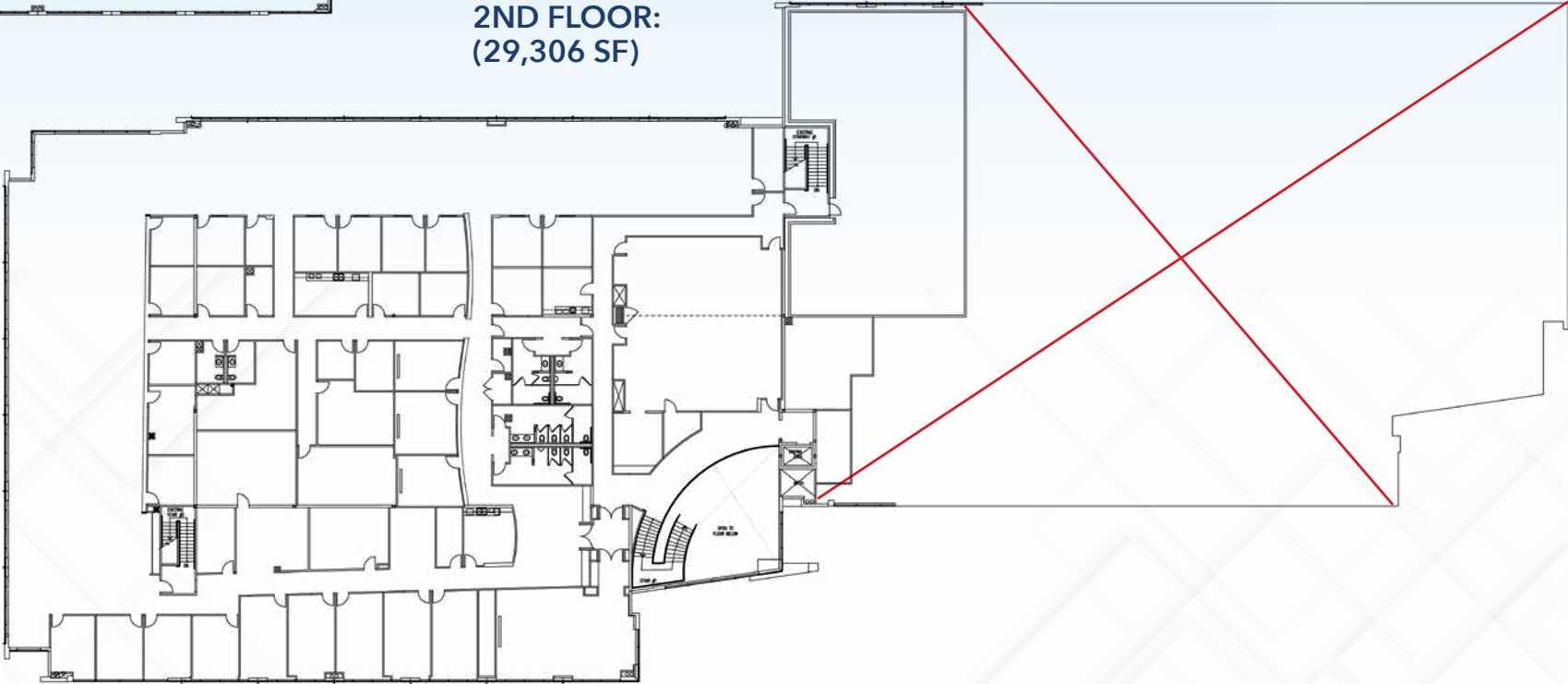
Agoura Rd



1ST FLOOR:  
(53,560 SF)



2ND FLOOR:  
(29,306 SF)







**LEE & ASSOCIATES**  
COMMERCIAL REAL ESTATE SERVICES

Lee & Associates®  
LA North/Ventura, Inc.  
Corporate ID #01191898  
A Member of the Lee & Associates  
Group of Companies  
5707 Corsa Avenue, Suite 200  
Westlake Village, CA 91362  
P 818.223.4388 F 818.591.1450  
[www.lee-associates.com](http://www.lee-associates.com)

**MIKE TINGUS**  
President  
818.223.4380  
[mtingus@lee-re.com](mailto:mtingus@lee-re.com)  
DRE# 01013724

**GRANT FULKERSON, SIOR**  
Principal  
818.304.4956  
[gfulkerson@lee-re.com](mailto:gfulkerson@lee-re.com)  
DRE# 01483890





**LEE & ASSOCIATES**  
COMMERCIAL REAL ESTATE SERVICES

Lee & Associates®  
LA North/Ventura, Inc.  
Corporate ID #01191898  
A Member of the Lee & Associates  
Group of Companies  
5707 Corsa Avenue, Suite 200  
Westlake Village, CA 91362  
P 818.223.4388 F 818.591.1450  
[www.lee-associates.com](http://www.lee-associates.com)

**MIKE TINGUS**  
President  
818.223.4380  
[mtingus@lee-re.com](mailto:mtingus@lee-re.com)  
DRE# 01013724

**GRANT FULKERSON, SIOR**  
Principal  
818.304.4956  
[gfulkerson@lee-re.com](mailto:gfulkerson@lee-re.com)  
DRE# 01483890





Lee & Associates®  
LA North/Ventura, Inc.  
Corporate ID #01191898  
A Member of the Lee & Associates  
Group of Companies  
5707 Corsa Avenue, Suite 200  
Westlake Village, CA 91362  
P 818.223.4388 F 818.591.1450  
www.lee-associates.com

**MIKE TINGUS**  
President  
818.223.4380  
mtingus@lee-re.com  
DRE# 01013724

**GRANT FULKERSON, SIOR**  
Principal  
818.304.4956  
gfulkerson@lee-re.com  
DRE# 01483890