

31238 VIA COLINAS

FOR LEASE • R&D/OFFICE BUILDING

WESTLAKE VILLAGE, CA 91362



GRANT FULKERSON, SIOR
Principal
818.304.4956
gfulkerson@lee-re.com
DRE# 01483890

BRETT SAUNDERS
Principal
818.581,7061
bsaunders@lee-re.com
DRE# 01991011



31238 VIA COLINAS

WESTLAKE VILLAGE, CA



MAJOR STREET IDENTITY



PRIME WESTLAKE VILLAGE LOCATION



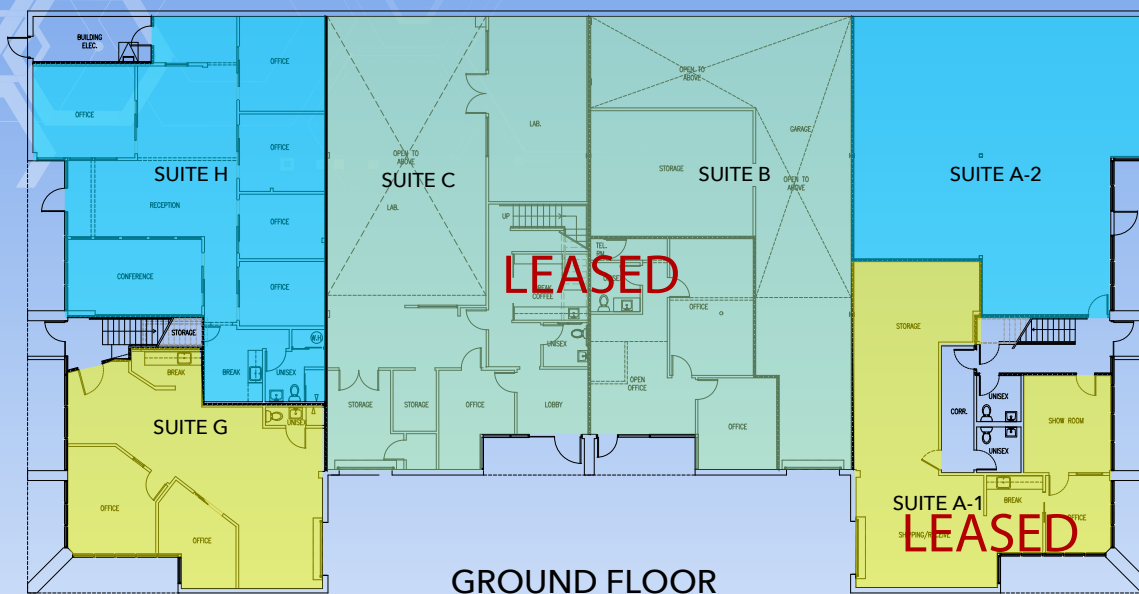
ANCHORED BY CLUB 805 (BASEBALL TRAINING FACILITY)



MAJOR BUILDING RENOVATIONS RECENTLY PERFORMED & IN PROGRESS

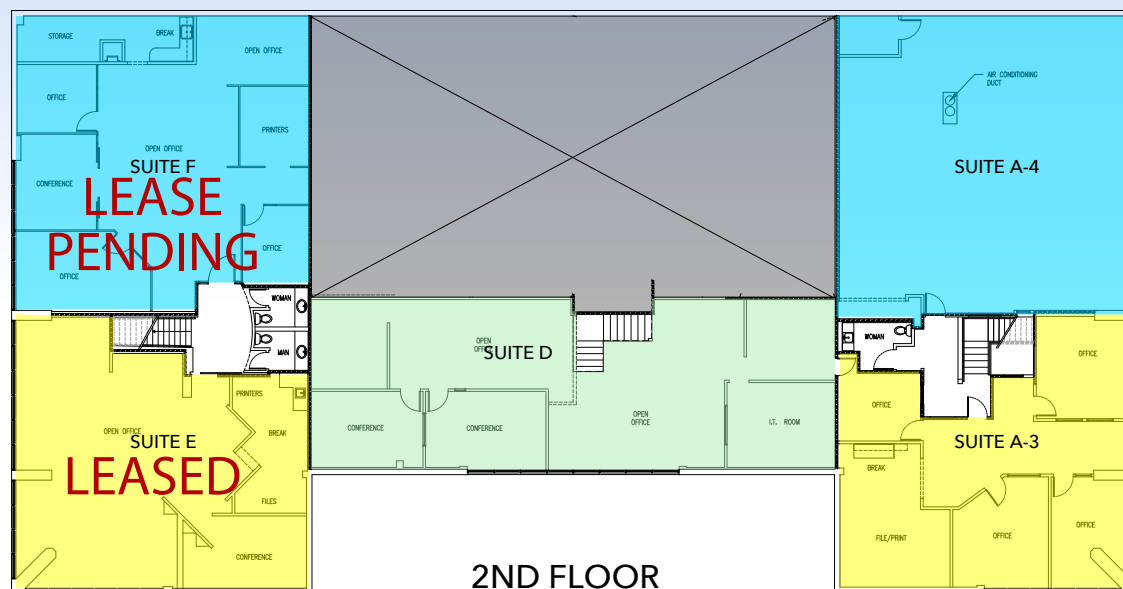


CLOSE PROXIMITY TO RETAIL AMENITIES & HIGHWAY 101



GROUND FLOOR

UNIT	SIZE	RENT (PSF MG)
A-1	1,478 SF	Leased
A-2	1,713 SF	\$1.95
B	2,637 SF	Leased
C	2,639 SF	Leased
G	1,131 SF	\$1.95
H	1,988 SF	\$1.95



2ND FLOOR

UNIT	SIZE	RENT (PSF MG)
A-3	1,499 SF	\$1.95
A-4	2,014 SF	\$1.95
D	2,314 SF	\$1.95
E	1,578 SF	Leased
F	1,898 SF	Lease Pending





GRANT FULKERSON, SIOR
Principal
818.304.4956
gfulkerson@lee-re.com
DRE# 01483890

BRETT SAUNDERS
Principal
818.581.7061
bsaunders@lee-re.com
DRE# 01991011